



# 341

## Frozen Uncarbonated Beverage Freezer

Single Flavor

### Features

Vary your menu by offering smoothies or frozen cocktails, fruit juices, coffees, cappuccino, and tea slush beverages, all served at the desired thickness.

#### Freezing Cylinder

One, 7 quart (6.6 liter).

#### Mix Hopper

One, 20 quart (18.9 liter). Optional refrigerated hopper approved for dairy products.

#### Indicator Light

Add Mix light alerts the operator to add mix.

#### Automatic Consistency Control

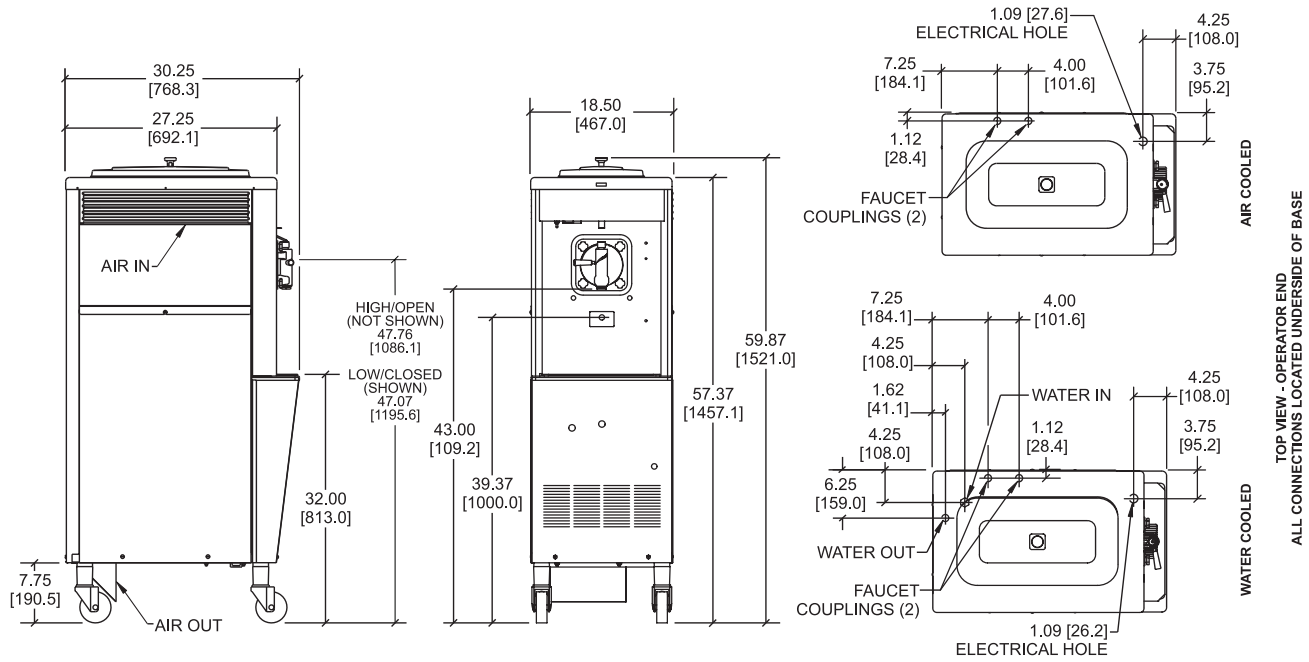
A specially designed viscosity control automatically maintains superior product quality. Adjustable control allows the operator to serve a wide variety of frozen beverages at the desired thickness.

#### Two Locking Casters

Front casters have a locking feature for operators to keep equipment in place. The locking casters can be released to move the equipment for cleaning.

#### Approval Mark Note:

The Approval marks shown below may not apply to every model configuration. Approvals may vary based on Voltage, Model Option and Accessory selection, please contact your local distributor for more information.



FIGURES IN BRACKETS INDICATE MILLIMETERS / DECIMAL AND FRACTIONAL DIMENSIONS EQUAL TO ( PLUS OR MINUS 1/16 INCH [1.5mm] ).

Weights	lbs.	kgs.
Net	394	178.8
Crated	434	197.0

*\*For reference only*

	cu. ft.	cu. m.
Volume	35.4	1.01

Dimensions	in.	mm.
Width	18-1/2	467
Depth	30-1/4	769
Height	59-7/8	1521
Floor Clearance	7-3/4	191

*\*Mounted on standard casters*

Electrical	Maximum Fuse Size	Minimum Circuit Ampacity	Poles (P) Wires (W)
115/60/1 Air	40	28	2P 3W
208-230/60/1 Air	15	12	2P 3W

This unit may be manufactured with other electrical characteristics and may have additional regulatory agency approvals. Consult the local Taylor distributor for other electrical characteristics and agency approvals based on specific electrical and country requirements.

**(For exact electrical information, approval marks, and refrigeration, always refer to the data label of the unit.)**

**Continuing research results in steady improvements; therefore, these specifications are subject to change without notice.**

**Bidding Specs**

Electrical: Volt \_\_\_\_\_ Hz \_\_\_\_\_ ph \_\_\_\_\_  
 Neutral: Yes No      Cooling: Air Water NA

**Options:** \_\_\_\_\_

All options may not be available in combination with others or with all electrical or cooling configurations. Please consult your local Taylor distributor.

**Specifications**

**Electrical**

One dedicated electrical connection is required. See the electrical chart for the proper electrical requirements. Manufactured to be permanently connected. Consult your local Taylor distributor for cord and receptacle specifications as local codes allow.

**Beater Motor**

One, 1/4 hp.

**Refrigeration System**

One, 7,500 BTU/hr. R449A.  
 (BTUs may vary depending on compressor used.)

**Air-Cooled**

Minimum 3" (76 mm) around all sides. Install the deflector provided to prevent recirculation of warm air. Minimum air clearances must be met to ensure adequate airflow for optimum performance.

**Accessories**

- Remote Auto Fill Systems
- Syrup Jars and Brackets

**Authorized Taylor Distributor**



2580 S Tejon St, Englewood, CO 80110  
 303-825-0171  
 RMDColorado.com



750 N. Blackhawk Blvd.  
 Rockton, Illinois 61072  
 www.taylor-company.com